

CHILDREN AND FAMILIES PARTNERSHIP

TERMS OF REFERENCE - DRAFT

NOVEMBER 2020

Vision

The vision of the Children and Families Partnership is for children and young people in Leicestershire to be safe and living in families where they can achieve their full potential and have good health and wellbeing.

Purpose of the Children and Families Partnership

The purpose of the Children and Families Partnership is to champion effective partnership working on shared outcomes and priorities that make a real difference to the lives of children and young people. By working together, the Partnership can also maximise resources and expertise, be more co-ordinated in the services provided and avoid duplication of effort.

It will achieve this purpose by providing leadership, direction and assurance on behalf of the Health and Wellbeing Board:

(i) To a Children and Families Partnership Plan delivering the following outcomes of the Joint Health and Wellbeing Strategy which relate to children and young people:

- a. To ensure the best start in life for children and their families
- b. To work proactively in partnership to keep children and young people safe and free from harm and sexual exploitation
- c. To support those families identified as most troubled to become self-sufficient and resilient
- d. To enable children with special educational needs and/or disabilities and their families to become increasingly independent through personalised, integrated care and support
- e. To enable children in care to experience good physical and mental health throughout their lives

(ii) To related boards and sub-groups contributing to the delivery of the above outcomes including:

- a. Leicestershire Education Excellence Partnership
- b. SEND and Inclusion Board

- c. Youth and Justice Partnership Board (six-monthly reports)
- d. Early Help Partnership
- e. Youth Campaign Group (six-monthly reports)

Terms of Reference

In order to deliver the vision set out above, the Children and Families Partnership will have the following role and duties:

- (a) To oversee the delivery of the Joint Health and Wellbeing Strategy priorities which relate to children through a Children and Families Partnership Plan for Leicestershire including:
 - i. The development of a Children and Families Partnership Plan, identifying key areas of partnership work that will have the biggest impact on the lives of children and young people;
 - ii. Overseeing its implementation against agreed milestones and ensuring the plan is delivered effectively and in line with national policy and local priorities;
 - iii. Developing a risk register for the Partnership Plan and implementing the necessary risk mitigation plans across the programme, with connectivity to the corporate governance systems in partner agencies;
 - iv. Agreeing a SMART performance framework for the Partnership Plan, and monitoring performance against this framework;
 - v. Making recommendations as appropriate to the Health and Wellbeing Board on the allocation of resources;
 - vi. Developing pooled budget arrangements where appropriate;
 - vii. Directing a communication plan targeted to a wide range of stakeholders across the partnership, with particular emphasis on the needs of the public and local councillors.
- (b) To ensure that the voice of children and families is represented in all the work of the Children and Families Partnership and that of partner organisations
- (c) To consider and address any barriers to achieving the vision of the partnership, to ensure that children and young people in Leicestershire are safe and living in families where they can achieve their full potential and have good health and wellbeing
- (d) To oversee the activity of sub-groups to ensure that they are delivering the required outcomes and meeting agreed milestones, and recommending action where delivery is not satisfactory

- (e) To identify opportunities for integrated commissioning and/or delivery of services with other place/partner initiatives (Leicestershire and wider) where there are identified benefits for doing so, and to ensure that this is planned and delivered to agreed outcomes
- (f) To set delegated limits for approval of variation of expenditure within any pooled budgets developed by the Partnership and review these on an annual basis

Membership of the Children and Families Partnership

- Cabinet Lead Member for Children and Families
- Department of Work and Pensions
- Director of Children and Families Services, LCC
- Director of Public Health representative
- Director representative from Leicester, Leicestershire and Rutland CCGs
- Director representative from LPT
- Director representative from UHL
- Education representatives
- National Probation Service representative
- Officer representative from District Councils
- Representative from Leicestershire Police
- Representative of Adults and Communities Department, LCC
- Representative of the Office of the Police and Crime Commissioner
- Voluntary Sector representatives

Membership will be regularly reviewed to ensure the effective operation of the Partnership

Meeting Frequency

Meetings will take place a minimum of quarterly

Chair

Cabinet Lead Member for Children and Families at Leicestershire County Council

Meeting Administration

Meetings will be administered by Democratic Services at Leicestershire County Council

The agenda and papers will be issued no later than 4 working days in advance unless later circulation has been authorised by the Chair (exceptional circumstances).

Location of Meetings

Leicestershire County Council Committee Rooms

Quoracy

In order to meet and conduct routine business 6 members must be present of which at least:

- 1 must be a health representative
- 1 must be a representative from Leicestershire County Council
- 4 must be from partner organisations not named in the previous 2 bullet points.

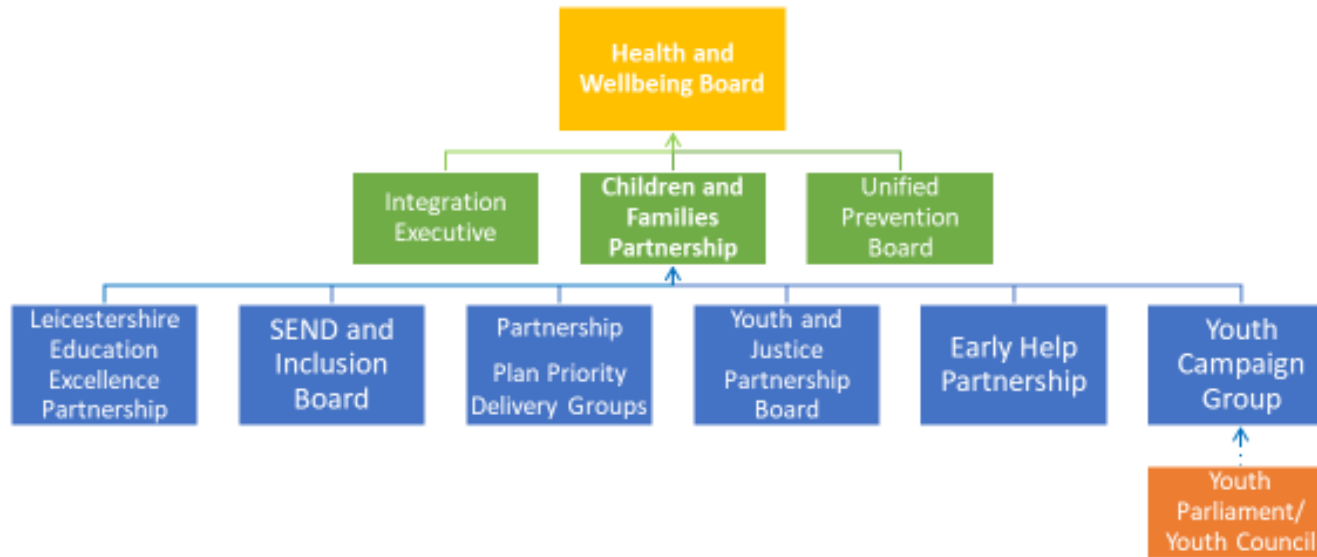
Reporting Arrangements

The Children and Families Partnership will submit:

- Six-monthly reports on performance against the Children and Families Partnership Plan to the Health and Wellbeing Board
- At least annual reports on performance against the Children and Families Partnership Plan to Leicestershire County Council's Cabinet and Children's Scrutiny Committee

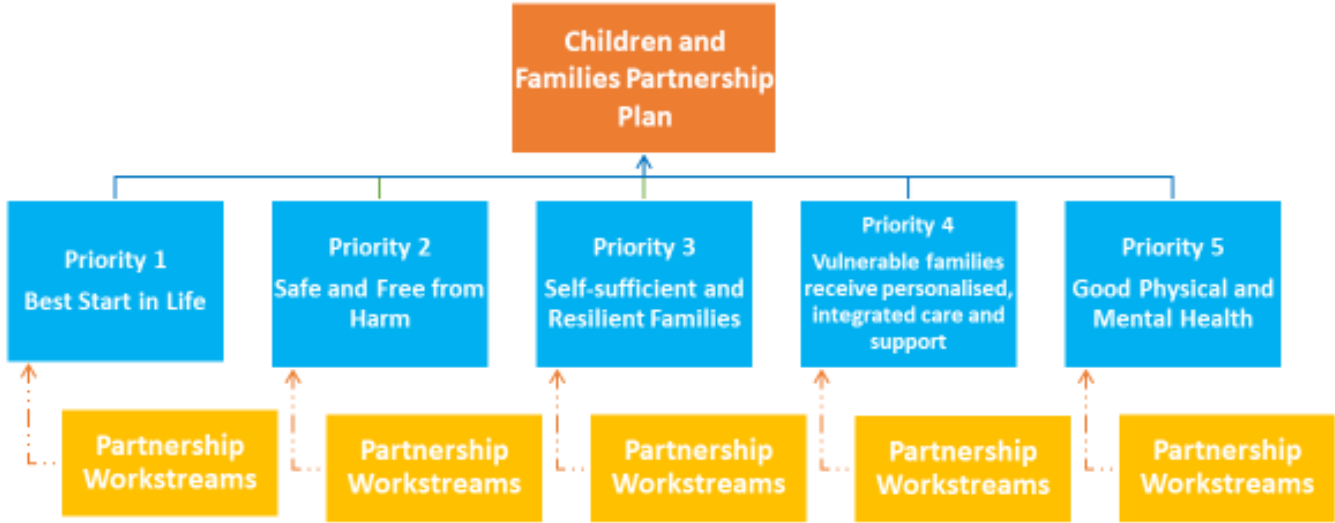
The Children and Families Partnership will ensure that risk is escalated as appropriate to the relevant partners, subject to the appropriate reporting mechanisms to the Health and Wellbeing Board and will satisfy any internal or external audit requirements of relevant partners.

Children and Families Partnership Board Governance



Key
 Reports to →
 Information shared with - - ->

Children and Families Partnership Plan Priority Delivery Groups



Key
Reports to →
Information shared with - - ->